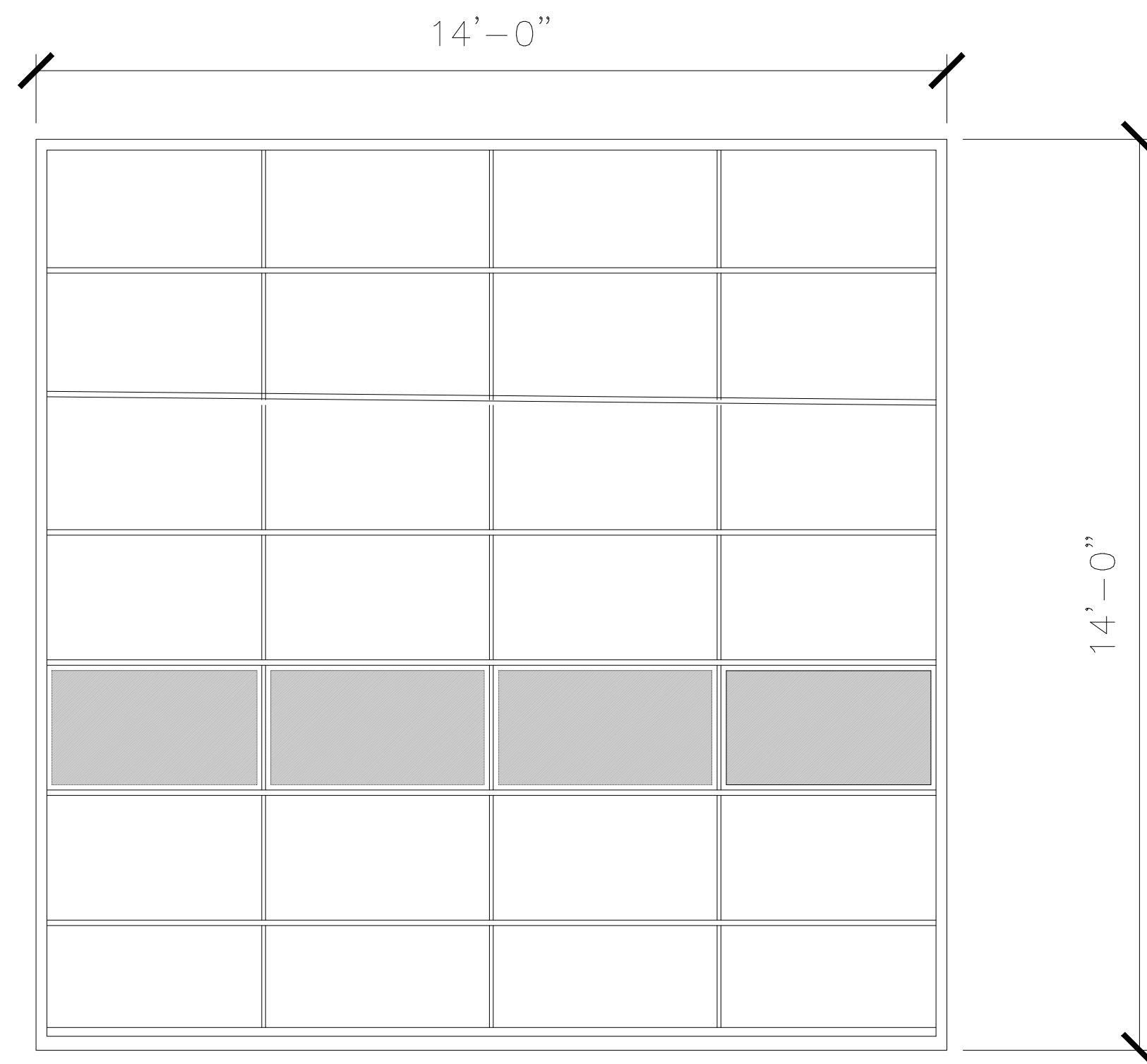


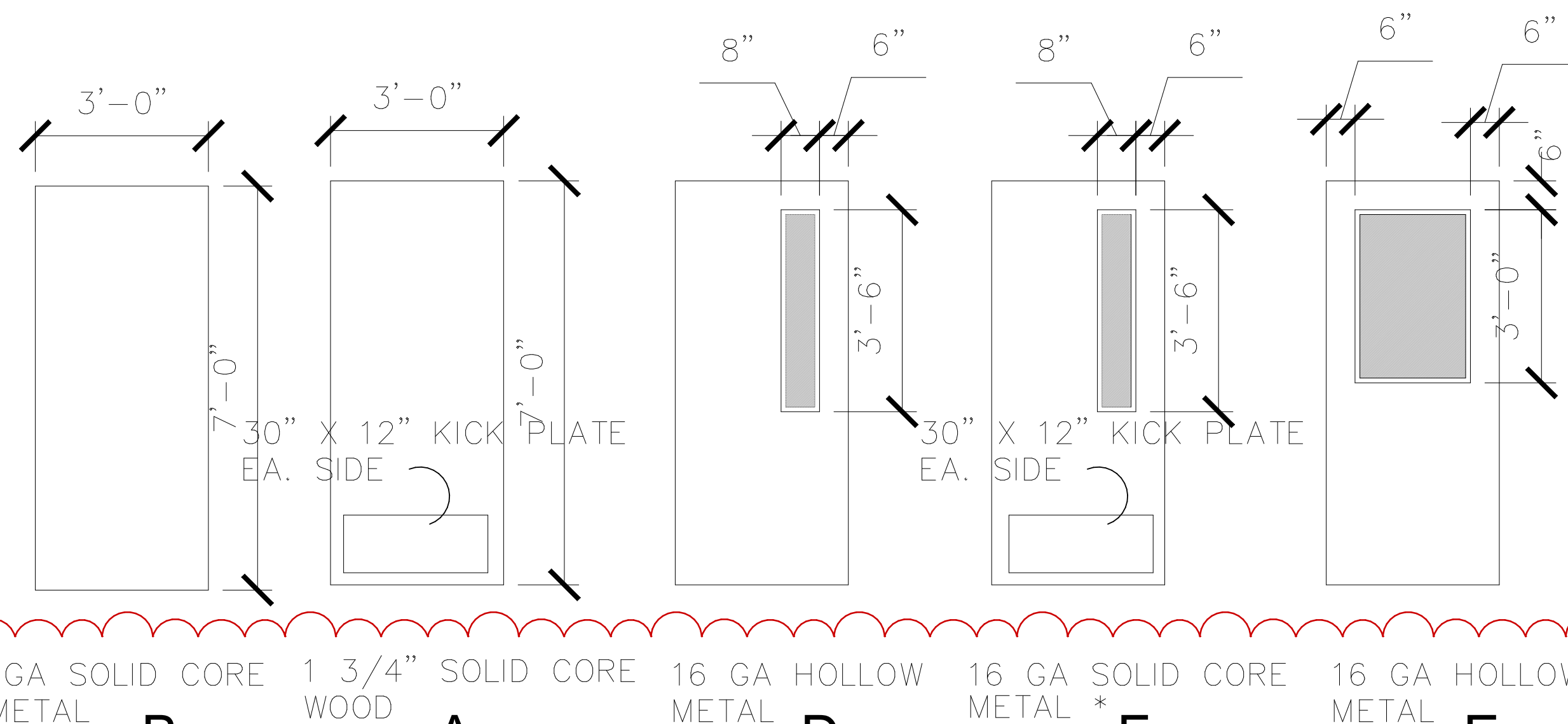
EXTERIOR FINISH SCHEDULE	
MATERIALS	GENERAL SPECIFICATIONS
PANELS	PANELS TO HAVE MFG COLOR AND FINISH. EXTERIOR WALLS TO BE A LIGHT BROWN . ROOF PANELS TO BE A RUDDY DARK RED AND BE APPROVED BY OWNER . COLOR OR COLOR OPTIONS TO BE APPROVED BY OWNER . PANELS TO BE SEALED PER MFG SPECIFICATIONS FOR WEATHERPROOFING.
STUCCO	TWO COAT STUCCO SYSTEM IS TO BE APPLIED. THIS APPLICATION IS USUALLY 7/8" THICK . COLOR TO BE LIGHT BROWN.
PAINT	PAINT SHALL BE WATER BASED LATEX ENAMEL WITH SATIN FINISH



STEEL SECTIONAL ROLL UP DOOR BY OVERHEAD DOOR MODEL 2400 INSULATED DOOR SECTION W DBL PANED TEMPERED GLASS PANELS AS SHOWN. DOOR NOT INCLUDED IN CONTRACTOR BID.

**DOOR ENTRY SYSTEMS**

- DOOR ENTRY SYSTEM
  - SIMPLEX L1000 KEYLESS LOCK KEYPAD (+48")
  - TOMAR MODEL 1790-1014 STROBE SWITCH DETECTOR



16 GA SOLID CORE METAL    1 3/4" SOLID CORE WOOD    16 GA HOLLOW METAL    16 GA SOLID CORE METAL \*    16 GA HOLLOW METAL

**B**    **A**    **D**    **F**    **E**

NOTE ! VERIFY DOOR MATERIAL WITH MATERIAL COLUMN IN DOOR SCHEDULE

**DOOR TYPES**

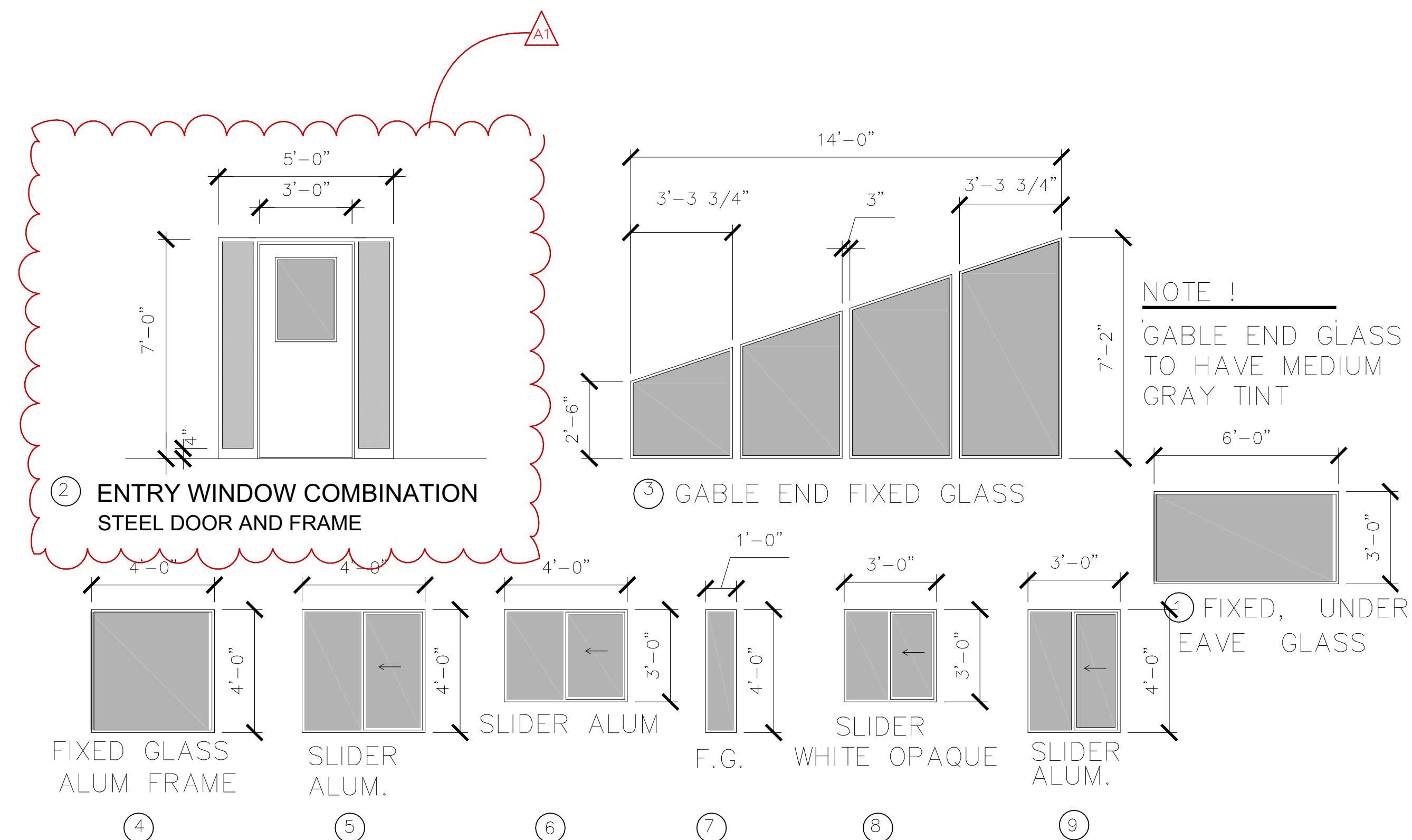
DOOR SCHEDULE		DOOR/FRAME SIZE		MTL	GLAZING	FIRE RATING LABEL	SET NO	HARDWARE LOCK SET	DOOR TYPE
NO.	WD	HGT	THK						
(A)	3'-0"	7'-0"	1 3/4"	HMC	TEMPERED	20 MIN	6	SIMPLEX IL 1000 (B)	E
(B)	3'-0"	7'-0"	1 3/4"	SMC	---	20 MIN	2	KEYED YALE 8867FL	B
(C)	2'-8"	7'-0"	1 3/4"	HMC	---	20 MIN	2	KEYED YALE 8867FL	B
(D)	3'-0"	7'-0"	1 3/4"	HMC	TEMPERED	20 MIN	6	SIMPLEX L1000 (B) W/ DOOR CLOSER	D
(E)	PR 36"	7'-0"	1 3/4"	HMC	---	45 MIN	4	PASS THR	F
(F)	3'-0"	7'-0"	1 3/4"	SMC	TEMPERED*	45 MIN	3	PANIC HARDWARE W/ DOOR CLOSER	F
(G)	3'-0"	7'-0"	1 3/4"	SMC	---	45 MIN	4	SIMPLEX L 1000 (B)	D
(H)	2'-4"	7'-0"	1 3/4"	HMC	---	---	4	ONE SIDE ONLY LEVER	B
(I)	3'-0"	7'-0"	1 3/4"	SMC	---	---	4	BEDROOM LEVER 2 SIDES NO LOCK	A
(J)	3'-0"	7'-0"	1 3/4"	SMC	---	---	5	BATHROOM PUSH BUTTON LOCK	A
(K)	3'-0"	7'-0"	1 3/4"	HMC	---	---	6	SIMPLEX L1000 LOCK	B
	14'-0"	14'-0"			OWNER SUPPLIED	OWNER INSTALLED			

SMC SOLID CORE METAL - PAINTED    (B) WITH BYPASS  
 AF ALUMINUM FRAMED    (S) WITH SEPARATE COMBINATION  
 HMC HOLLOW METAL CORE - PAINTED    (D) WITH D212  
 MTL METAL    TEMPERED\* FIRE WIRED GLASS

1. PROVIDE WEATHER STRIPPING AT ALL EXTERIOR DOORS
2. ALL LOCKSETS MUST MEET ACCESIBILITY GUIDELINES OF THE ADA AND THE REQUIREMENTS OF THE UNIFORM FEDERAL ACCESSIBILITY STANDARDS AND ANSI 117.1. ALL REQUIRING EASE OF ACCESSIBILITY FOR THE DISABLED.
3. MAXIMUM EFFORT TO OPERATE DOORS SHALL NOT EXCEED 5 POUNDS OF PRESSURE ON EXTERIOR OR INTERIOR DOORS. CBC 11B -404.2.9
4. EGRESS DOORS SHALL BE READILY OPERABLE FROM THE EGRESS SIDE WITHOUT THE USE OF A KEYOR SPECIAL KNOWLEDGE OF EFFORT.
5. HAND-ACTIVATED DOOR-OPENING HARDWARE SHALL BE CENTERED BETWEEN 30 AND 44 INCHES ABOVE THE FLOOR. LATCHING AND LOCKABLE DOORS THAT ARE HAND-ACTIVATED AND WHICH ARE IN A PATH OF TRAVEL SHALL BE OPERABLE WITH A SINGLE EFFORT BY LEVER TYPE HARDWARE, PANIC BARS, PUSH-PULL ACTIVATING BARS, OR OTHER HARDWARE DESIGNED TO PROVIDE PASSAGE WITHOUT REQUIRING THE ABILITY TO GRASP THE OPENING HARDWARE. CBC 11B-404.2.9 ITEMS 1 & 2
6. ALL DIMENSIONS ARE TO FACE OF STUDS

**HARDWARE SETS**

- REMOVED HARDWARE SET NO. 1**
- HARDWARE SET NO. 2 - EXTERIOR EXIT DOORS**
- 1 1/2 PR BUTTS MCKINNEYTA2714 4 1/2"x4 1/2" NRP 26D
  - CLOSER UNIVERSAL HRDWRE 4031 HEA VY DUTY AL 319CR
  - WEATHER STRIP PEMKO 346-C-36" ALUM.
  - RAIN DRIP PEMKO 216 -AV-36"
  - DOOR BOTTOM THRESHOLD PEMKO 158-A-36"
- HARDWARE SET NO 3- EXTERIOR DOORS**
- 1 1/2 PR BUTTS MCKINNEYTA2714 4 1/2"x4 1/2" NRP 26D
  - EXIT DEVICE WITH PANIC HARDWARE
  - CLOSER UNIVERSAL HRDWRE 4031 HEA VY DUTY AL 319CR
  - WEATHER STRIP PEMKO 346-C-36" ALUM.
  - RAIN DRIP PEMKO 216 -AV-36"
  - DOOR BOTTOM THRESHOLD PEMKO 158-A-36"
- HARDWARE SET NO. 4- INTERIOR DOOR**
- 1 1/2 PR BUTTS MCKINNEYTA2714 4 1/2"x4 1/2" NRP 26D
  - STOP IVES FS13 WITH RISER 26D
- HARDWARE SET NO. 5 - INTERIOR DOOR RESTROOM**
- 1 1/2 PR BUTTS MCKINNEYTA2714 4 1/2"x4 1/2" NRP 26D
  - CLOSER UNIVERSAL HRDWRE 4031 HEA VY DUTY AL
  - STOP IVES FS13 WITH RISER 26D
  - KICK PLATE SATIN STAINLESS STEEL 34"x30"x0.050
- HARDWARE SET NO. 6 - EXTERIOR DOOR-UTILITY ROOM**
- 1 1/2 PR BUTTS MCKINNEY TA2714 4 1/2"x4 1/2" NRP 26D
  - CHAIN STOP HD 4031 HEA VY DUTY AL 319CR
  - WEATHER STRIP PEMKO 346-C-36" ALUM.
  - RAIN DRIP PEMKO 216 -AV-36"
  - CLOSER UNIVERSAL HRDWRE 4031 HEA VY DUTY AL
  - THRESHOLD PEMKO 158-A-36"
  - LOCK GUARD IVES LGI 32D



**WINDOW TYPES AND SIZES**

NOTE! ALL GLASS IS TO BE TEMPERED, DUAL PANED HERMETICALLY SEALED. U FACTOR OF THE WINDOWS WILL BE 0.32 AND THE SKGC = 0.25 FRAMES TO BE BLACK ALUM FRAMES

**ENGINEER**

**ARCHITECT**

**LICHAU AND ASSOCIATES ARCHITECTS, INC.**  
 560 Wall Street Suite C  
 Auburn, California 95603  
 530-885-7178

**AN ARCHITECTURAL AND PLANNING GROUP**

A New Firehouse for  
**NEWCASTLE FIRE STATION**  
 9350 Old State Highway Newcastle, CA 95658

JOB NUM. 160902  
 DRAWN BY REL  
 CHECKED BY REL  
 DATE 24 MARCH 2020  
 06 JUNE 2020  
 REV. Addendum #1/AT  
 REV.  
 REV.

SHEET NAME  
**SCHEDULES DOOR WINDOW**

SHEET NUMBER  
**A-1.1**