

7 KITCHEN CABINET ELEVATIONS
1/4" = 1' - 0"

BATHROOM INTERIOR ELEVATIONS
1/4" = 1' - 0"

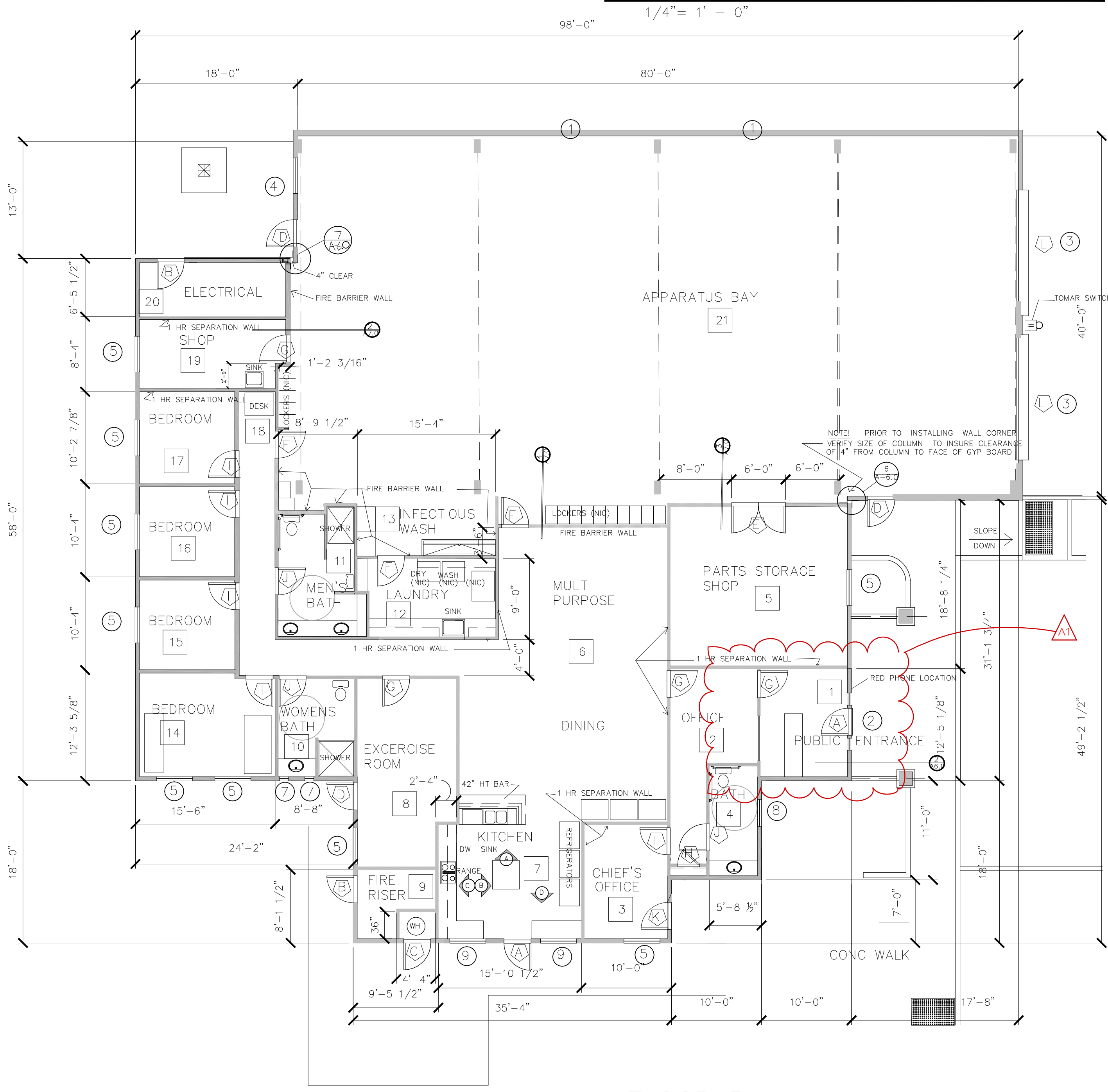
NOTE ! SEE ENLARGED DRAWINGS SHT A-2.1

GENERAL ROOM FINISH SCHEDULE							
NO.	ROOM	FLOOR	WALLS	WALL BASE	CEILING	CLG HT.	COMMENTS
1	PUBLIC ENTRANCE	CONCRETE	PAINT - PRIMARY: P 1	6" RUBBER BASE	ACCOUSTICAL TILE	9'-5"	
2	OFFICE	CONCRETE	PAINT - PRIMARY: P 1	6" RUBBER BASE	ACCOUSTICAL TILE	9'-5"	NOTE ! ALL CONCRETE FLOORS TO BE SANDED, COLORED, AND SEALED. REFER TO SPECIFICATIONS FOR MIX DESIGN.
3	CHIEF'S ROOM	CONCRETE	PAINT - PRIMARY: P 1	6" RUBBER BASE	ACCOUSTICAL TILE	9'-5"	
4	BATH	CONCRETE	PAINT - PRIMARY: P 2	CT-1/PT1	CT PT2	HARD CEILING/PAINT P 2	9'-10"
5	PARTS STORAGE	CONCRETE	PAINT - PRIMARY: P 1	6" RUBBER BASE	ACCOUSTICAL TILE	9'-5"	
6	MULTI PURPOSE	CONCRETE	PAINT - PRIMARY: P 2	TILE PT 1	ACCOUSTICAL TILE	9'-5"	
7	KITCHEN	CONCRETE	PAINT - PRIMARY: P 2	TILE PT 1	ACCOUSTICAL TILE	9'-5"	
8	EXERCISE ROOM	CONCRETE	PAINT - P 1	6" RUBBER BASE	ACCOUSTICAL TILE	9'-5"	
9	FIRE RISER	CONCRETE	PAINT - P 1	6" RUBBER BASE	HARD CEILING/PAINT P 1	9'-10"	
10	WOMENS BATH	CONCRETE	PAINT - PRIMARY: P 2	CT-1/PT1	CT PT2	HARD CEILING/PAINT P 2	9'-10"
11	MEN'S BATH	CONCRETE	PAINT - PRIMARY: P 2	CT-1/PT1	CT PT2	HARD CEILING/PAINT P 2	9'-10"
12	LAUNDRY	CONCRETE	PAINT - PRIMARY: P 2	6" RUBBER BASE	HARD CEILING/PAINT P 2	9'-10"	
13	INFECTIOUS WASH	CONCRETE	PAINT - PRIMARY: P 2	6" RUBBER BASE	HARD CEILING/PAINT P 2	9'-10"	
14	BEDROOM	CONCRETE	PAINT - PRIMARY: P 1	6" RUBBER BASE	ACCOUSTICAL TILE	9'-5"	
15	BEDROOM	CONCRETE	PAINT - PRIMARY: P 1	6" RUBBER BASE	ACCOUSTICAL TILE	9'-5"	
16	BEDROOM	CONCRETE	PAINT - PRIMARY: P 1	6" RUBBER BASE	ACCOUSTICAL TILE	9'-5"	
17	BEDROOM	CONCRETE	PAINT - PRIMARY: P 1	6" RUBBER BASE	ACCOUSTICAL TILE	9'-5"	
18	HALLWAY	CONCRETE	PAINT - PRIMARY: P 1	6" RUBBER BASE	ACCOUSTICAL TILE	9'-5"	
19	SHOP	CONCRETE	PAINT - PRIMARY: P 1	6" RUBBER BASE	ACCOUSTICAL TILE	9'-5"	
20	ELECTRICAL	CONCRETE	PAINT - PRIMARY: P 1	6" RUBBER BASE	HARD CEILING/PAINT P 1	9'-10"	
21	APPARATUS BAY	CONCRETE	PAINT - FACTORY APPLIED	METAL SIDING	GALVANIZED FLASH'G	HARD CEILING/PAINT P 2	VAULTED

MATERIALS AND FINISHES			
NO.	COLOR AND MATERIALS SPECIFICATION	DESCRIPTION	MANUFACTURER / SUPPLIER
P 1	BENJAMIN MOORE OC-61 WHITE DIAMOND OR EQUAL	ECO SPEC WB INTERIOR LATEX ENAMEL PAINT SATIN FINISH ON WALLS	LOCAL DEALERS
P 2	BENJAMIN MOORE 2134-60 WHITESTONE OR EQUAL	ECO SPEC WB INTERIOR LATEX ENAMEL PAINT SEMI-GLOSS FINISH ON WALLS	LOCAL DEALERS
METAL DOORS	BENJAMIN MOORE 2111-30 MUSTANG OR EQUAL		
WOOD DOORS	WOOD STAIN: MED OAK STAIN W/ SEALANT OR APPROVED EQUAL		
ENTRY DOOR C	BENJAMIN MOORE OC-61 WHITE DIAMOND OR EQUAL		
METAL STANDING SEAM ROOF	MBCI SLIMLINE OR EQUAL		
METAL WALL PANELS	MBCI FW - 120 OR EQUAL		
METAL TRIM	MBCI OR EQUAL		
STONE FRONT	WAXMOR OR EQUAL		
CT 1	CERAMIC TILE 8" HT.		

NOTE! PROVIDE PAINT SWATCHES FOR APPROVAL PRIOR TO APPLICATION

- LOW VOLTAGE SYSTEM NOTES**
DEFERRED
- RP RED PHONE WIRED TO DISPATCH INCLUDING ENCLOSURE MOUNTED TO EXTERIOR WALL (+42")
 - S SPEAKER, CEILING MOUNTED, FOR RADIO/ALARM / DOOR BELL, WITH TONE ACTIVATED LIGHTS
 - DOOR ENTRY SYSTEM
 - SIMPLEX L1000 KEYLESS LOCK PAD (+48")
 - ED TOMAR MODEL 1790-1014 STROBE SWITCH DETECTOR.



FLOOR PLAN
1/8" = 1' - 0" 6,953 SQ.FT.

ENGINEER

ARCHITECT

LICENSURE ARCHITECT
BOARD E. CALIFORNIA
C-10592
7-01-21
RENEW
STATE OF CALIFORNIA

LICHAU AND ASSOCIATES ARCHITECTS, INC.
560 Wall Street Suite C
Auburn, California 95603
916-887-7178
AN ARCHITECTURAL AND PLANNING GROUP

A New Firehouse for
NEWCASTLE FIRE STATION
9350 Old State Highway Newcastle, CA 95658

JOB NUM. 160902
DRAWN BY REL
CHECKED BY REL
DATE 24 MARCH 2020
REV. 20 FEB 2020
06 JUNE 2020
REV. Addendum #1
REV.
REV.

SHEET NAME
FLOOR PLAN DETAILS

SHEET NUMBER
A-1.0