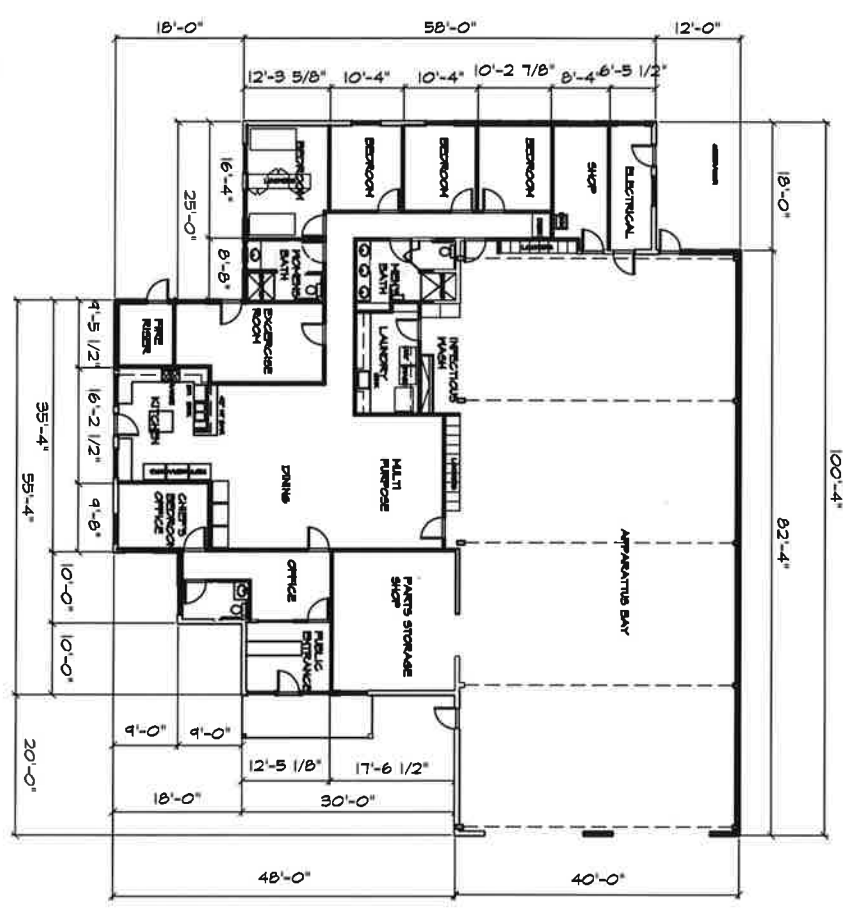


FLOOR PLAN
1/8" = 1'-0"



6,920 SQ. FT.

A New Firehouse for

NEWCASTLE FIRE STATION

9350 Old State Highway Newcastle, CA 95658

LICHAU AND ASSOCIATES ARCHITECTS, INC.

100 El Dorado St.
Auburn, California 95603
916-835-7178



AN ARCHITECTURAL AND PLANNING GROUP



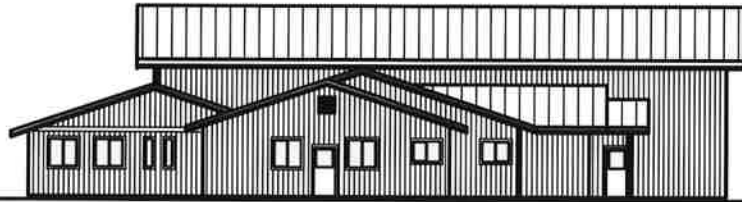
ARCHITECT

ENGINEER

ADDITIONAL NOTES:
 DRAWN BY: JEB
 CHECKED BY: JEB
 DATE: 2/28/11
 REV: 1/04/11
 REV: _____
 REV: _____

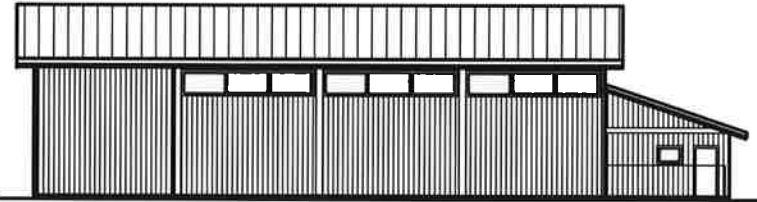
SHEET NAME

SHEET NUMBER



WEST ELEVATION

1/8" = 1' - 0"



EAST ELEVATION

1/8" = 1' - 0"



NORTH (ENTRY) ELEVATION

1/8" = 1' - 0"



SOUTH ELEVATION

1/8" = 1' - 0"

ENGINEER

ARCHITECT



LICHAU AND ASSOCIATES ARCHITECTS, INC.
 100 El Dorado St.
 Auburn, California 95603-7178
 AN ARCHITECTURAL AND PLANNING GROUP

A New Firehouse for
NEWCASTLE FIRE STATION
 9350 Old State Highway Newcastle, CA 95658

FOOTING 180002
 DRAWN BY: REL
 CHECKED BY: REL
 DATE: Nov 2017
 REV: _____
 REV: _____
 REV: _____

SHEET NAME

SHEET NUMBER